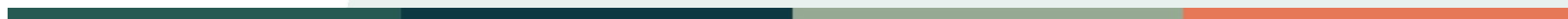




Count on us.

Wildfire Emergency Preparedness

Department of Emergency Management



Two-Part Emergency Alerting System

- We use two complementary alerting tools to reach as many people as possible during a wildfire or other emergency.
- This system helps us notify both residents with known addresses and anyone physically in harm's way, even if they're just visiting.
- The goal is simple: get critical information out fast—no matter where you are or if you're already signed up.
- Tools we use:
 - Everbridge – Alerts based on addresses (great for residents and workplaces)
 - IPAWS – Alerts to all cell phones in a specific area (great for people on the move)



Everbridge

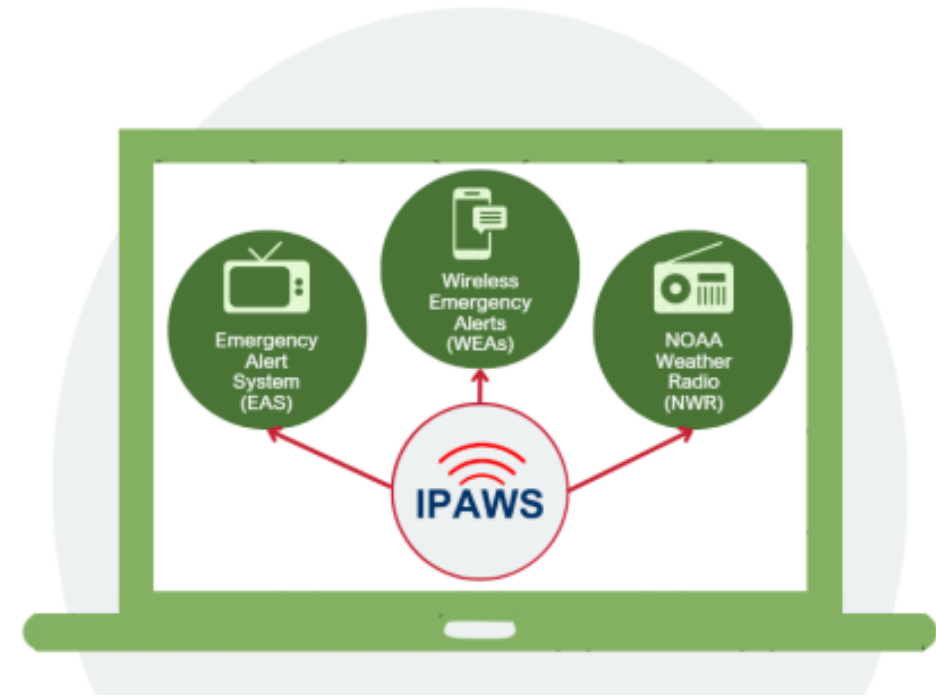
- Mass Notification System

- Landlines, VoIP, and mobile phones (data provided by the vendor)
- Geographically registered numbers – alerts are sent based on the phone's registered location, not its real-time location.
- Unverified data – Because the database is vendor-provided, some contact information may be outdated or incorrect.



Integrated Public Alert and Warning System

- IPAWS is a federally managed system designed to disseminate life-saving alerts through multiple communication pathways.
- IPAWS Components:
 - Wireless Emergency Alerts (WEA): Sends emergency text alerts to any mobile device in the alert area.
 - Emergency Alert System (EAS): Broadcasts alerts via TV and radio.
 - Non-Weather Emergency Messages (NWEM): Sends alerts via NOAA Weather Radio.



Wildfire Alert Phases

Ready – Set - Go



Wildfire Alert Phases

Ready

Prepare,
monitor,
and pack
your
valuables.

Set

Be set to
evacuate at
a moment's
notice.

Go

Leave
immediately



Ready (Be Prepared)

Level 1 ***BE READY***

Prepare, monitor,
and pack your
valuables.

- Alerts at this stage inform residents that a wildfire is in the area. While no immediate evacuation is required, people should prepare by assembling emergency supplies, securing their property, and reviewing evacuation routes.

Ready (Be Prepared)

Level 2 ***BE SET***

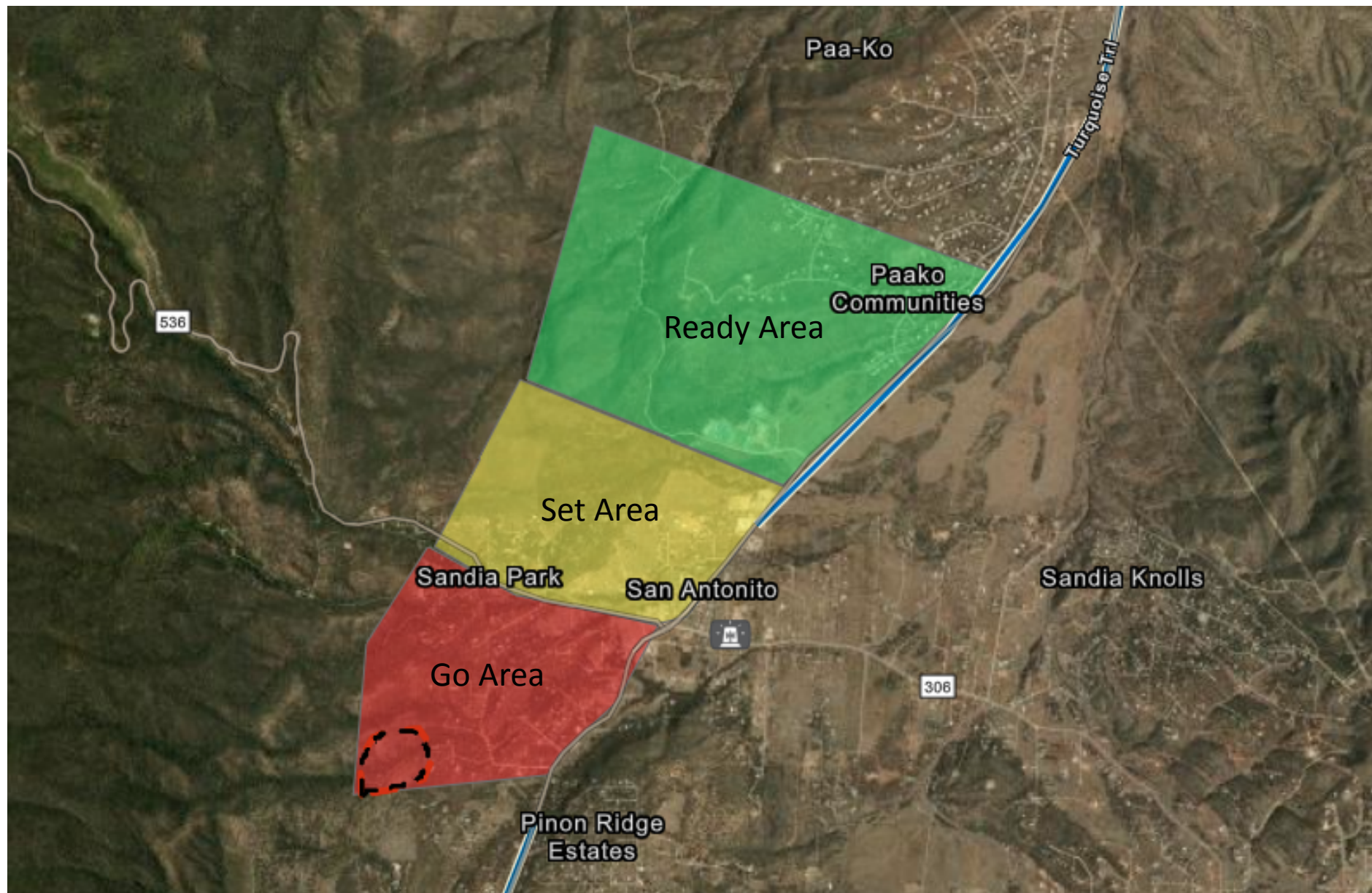
Be set to
evacuate at a
moments notice.

- Alerts at this stage indicate that an evacuation may soon be necessary. Residents should pack essential items, make final preparations, and be ready to leave quickly if conditions worsen.

Ready (Be Prepared)

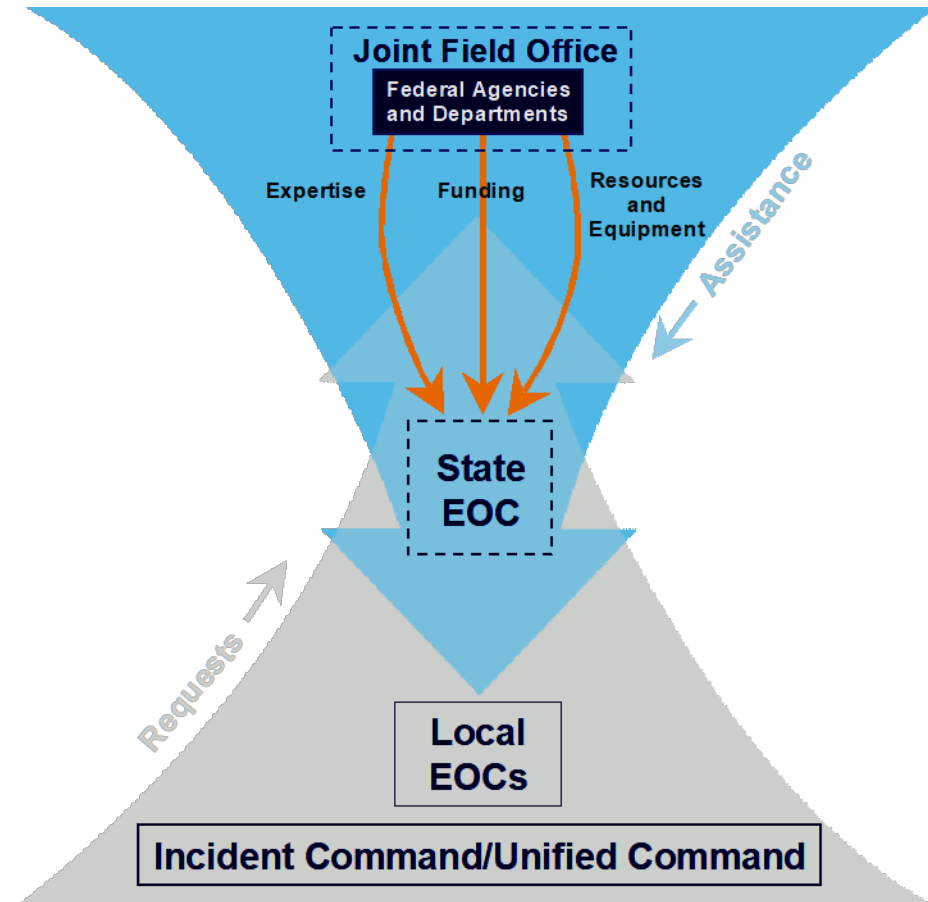


- Alerts at this stage are issued when an evacuation is required. Residents must leave immediately using designated routes, as emergency services may not be available if they choose to stay



Emergency Operations Center

- County Departments
 - Serve as the coordinating center for all County-level support
- State Level Support
 - New Mexico Department of Homeland Security and Emergency Management
- Federal Level Support
 - FEMA



Community Preparedness



Emergency Personal Preparedness


- Communication Plan
- Family Emergency Plan
- Sheltering
- Pet And Service Animal Plan
- Disaster Preparedness Kit



Emergency Kits



Basic Disaster Supplies

- Water (1 gallon per person per day for drinking and cleaning)
 - Food (enough non-perishable snacks for several days)
 - Battery or hand-crank radio + NOAA Weather Radio for alerts
 - Flashlight
 - First aid kit
 - Extra batteries
 - Whistle (to get attention if needed)
 - Dust mask (to filter bad air)
 - Plastic sheeting and duct tape (for sheltering in place)
 - Wet wipes, trash bags, and ties (for personal hygiene)
 - Wrench or pliers (to turn off utilities)
 - Manual can opener (to open food)
 - Local maps
 - Cell phone, chargers, and a backup battery
- 

Additional Emergency Supplies



- Over-the-counter meds like pain relievers, anti-diarrhea meds, antacids, or laxatives
- Prescription eyeglasses and contact lens solution
- Infant formula, bottles, diapers, wipes, and diaper cream
- Feminine supplies and personal hygiene items

Important Documents

- Family records
- Wills
- Property deeds
- Copy of ID
- Social Security card
- Insurance policy info (homeowners or renter's)
- Damage details
- Bank and charge account info
- Tax records



FEMA

