



BERNALILLO COUNTY FIRE & RESCUE

Wildfire Preparedness

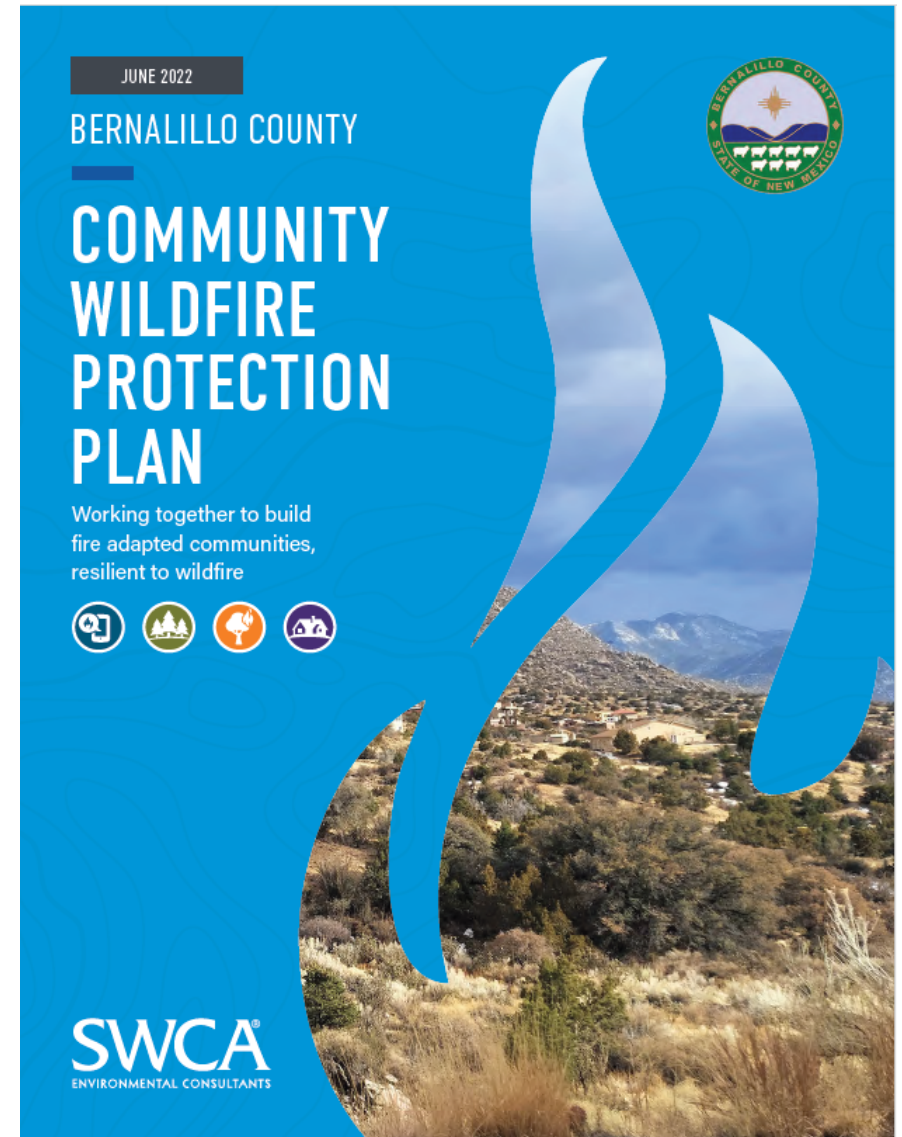
BERNALILLO COUNTY FIRE

- Service the North Valley, South Valley & East Mountains
- 13 Stations
- 3 Brush Trucks & 3 Tenders per region
- 20-25 Firefighters per region
- 5 Personnel per station
 - 24/7 365
- 911 Response
- Work with partnering agencies for mutual aid response



MITIGATION

- New Mexico Forestry Division
 - USFS
 - Kirtland AFB
 - Albuquerque Open Space Division
 - Ciudad Soil and Water Conservation District
 - Middle Rio Grande Conservancy District
 - East Mtn. Wildfire Preparedness Association
 - Team Rubicon
- We partner with these agencies to ensure the efforts are in line with the priorities of our Community Wildfire Protection Plan.



FIRE ENVIRONMENT

Home Ignition Zone

If you live next to a natural vegetation area, you should provide firefighters with the space they need to protect your home. Create a buffer zone by removing weeds, brush, and other vegetation.

This helps keep the fire away from your home and reduces the risk from flying embers.

Wildfire Embers Can Travel Over One Mile

A home within one mile of a natural area is considered a part of an ember zone, where wind-driven embers can be a risk to your property. You and your home must be prepared well before a fire occurs. Ember fires can destroy homes or neighborhoods far from the actual front of the fire.

CONSIDER THIS

Flammable vegetation between and around homes and outbuildings increases the risk of wildfire spreading throughout the community, endangering lives and property.

Pre-fire planning, vegetation management, and sufficient breaks in vegetation allow firefighters an opportunity to keep fire from entering the community.

DEFENSIBLE SPACE ZONE 0

Home Hardening

- Focus on ember wash from wildfires
- Construction Materials
- Filling gaps and penetrations that embers could fly into
- Seal eaves & screen vents



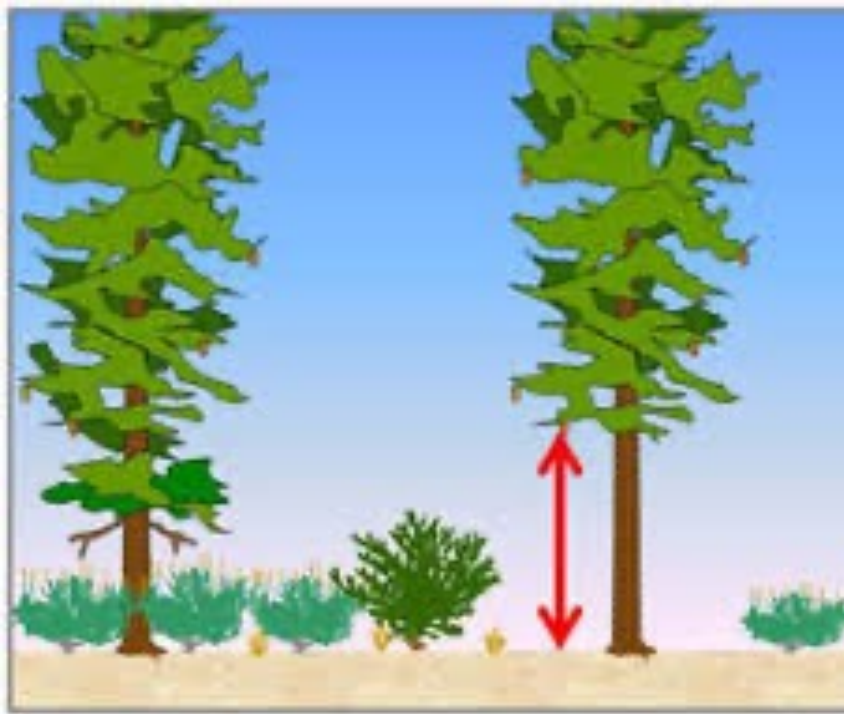


DEFENSIBLE SPACE ZONE 1

- 0-5 feet around home hard surfaces no combustibles
- 5-30 feet use non woody low growing herbaceous vegetation

ZONE 1

30 feet of lean & green



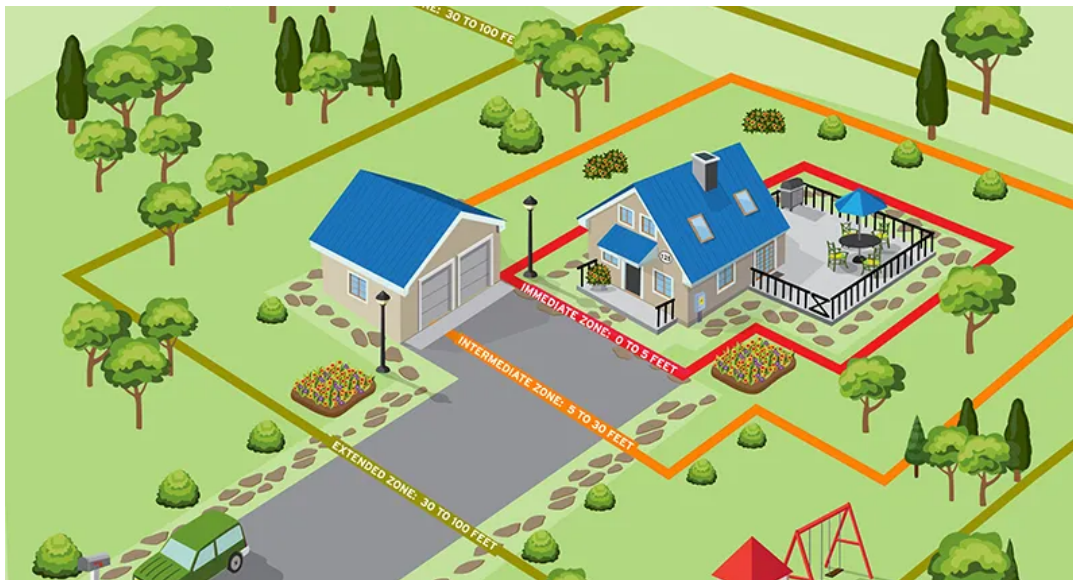
DEFENSIBLE SPACE ZONE 2

- 30-100 feet
- Create vegetation groups or islands
- Break up continuous fuels
- Reduce ladder fuels



DEFENSIBLE SPACE ZONE 3

- 100-200 feet
- 10 feet spacing between trees
- Remove ladder fuels and dead trees





CREATING FIRE RESISTANT LANDSCAPES

- Defensible Space Walkthroughs
 - BCFR-Walk your property and give advice on defensible space
 - Email wildland coordinator for an appointment
- The County is working on a green waste voucher program
 - Free vouchers for homeowners to take green waste to the transfer stations instead of the two weeks a year it currently is

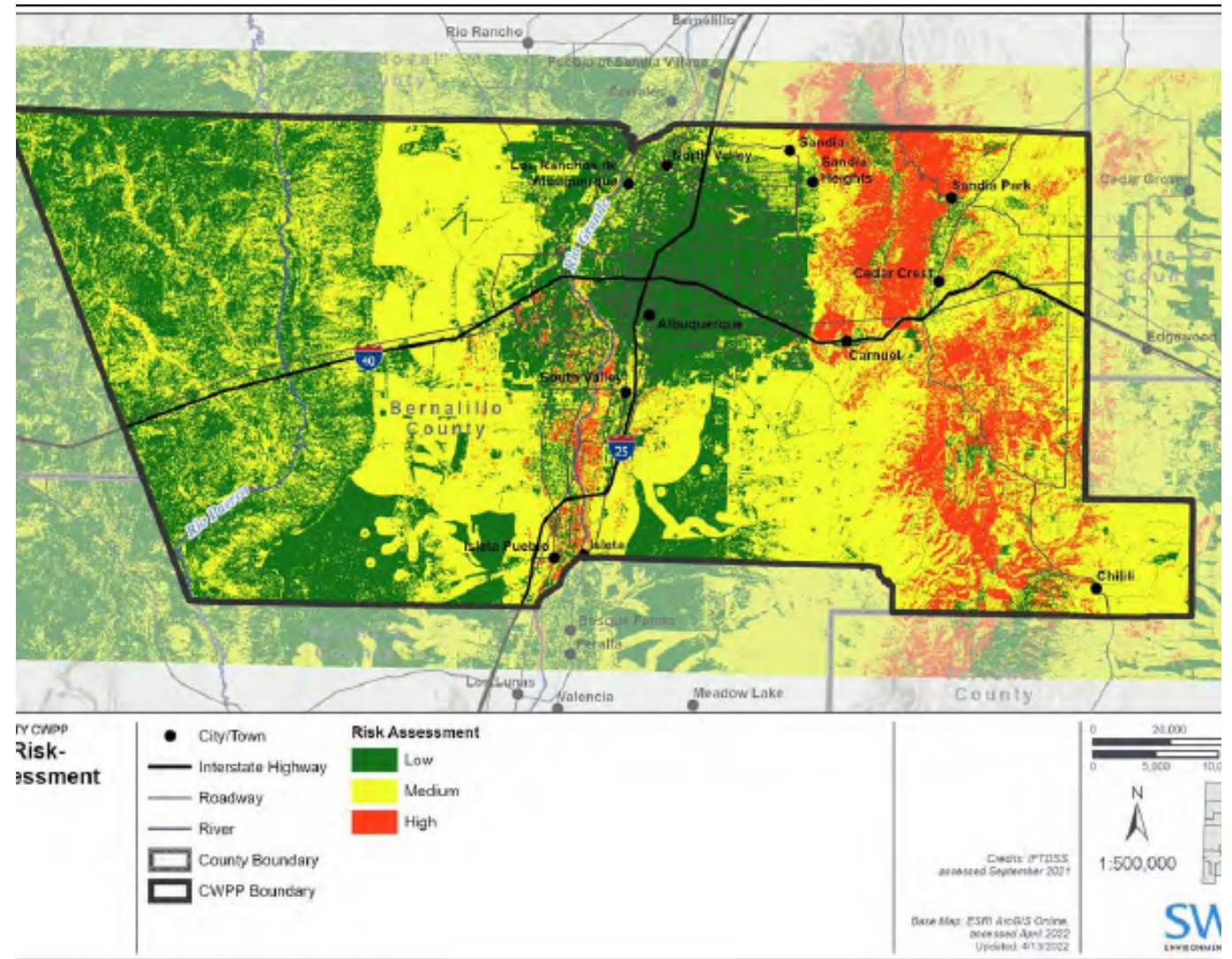
STRUCTURE TRIAGE

WHAT FIREFIGHTERS LOOK AT

- Defensible-Standalone
 - Good defensible space
 - Building materials are fire resistant
 - Needs no work-Fuels are away from structure
 - Defensible-Prep and Hold
 - Good defensible space
 - Building materials are fire resistant
 - Needs minimal work to remove fuels
 - Safety Zone Present
 - Non-Defensible-Prep and Leave
 - Moderate defensible space
 - Building materials mostly fire resistant
 - Needs work to remove fuels
 - Have enough time to prep
 - No Safety Zone present
 - Non-Defensible-Rescue Drive-by
 - Little defensible space
 - Building materials are flammable
 - No safety zone
 - Not enough time to commit
 - Not worth committing resources
 - Will go back after fire front passes
-

HOME INSURANCE

- If you or anyone you know is being dropped by your insurance due to wildfire risk, send the wildland coordinator an email.
 - NM state Forestry Division is compiling the data of where and why this is happening
 - Hopefully in the future we can tailor mitigation efforts and programs to address some of these issues



3. Composite Risk-Hazard Assessment.

MATERIALS

- CRR pamphlets
 - Information on defensible space and home hazard assessment QR code
- CRR wildland survey
- Ready, Set, Go!
 - Preparedness
 - Defensible space
 - Go bags
 - Evacuations
- Living With Fire
 - Homeowners guide to creating a defensible space
 - Information on evacuations

Wildfire Evacuation Checklist

	People and Pets
	Papers and Important Documents
	Prescriptions/Meds and Eyeglasses
	Pictures and Irreplaceable Mementos
	Personal computers and cell phones
	Plastic (credit cards), wallet and cash



Joshua Skrondahl
WILDLAND COORDINATOR

Fire & Rescue
6840 2nd ST NW
Albuquerque, NM 87107

PHONE

505.468.1364

CELL

505.250.7844

EMAIL

jaskrondahl@bernco.gov
